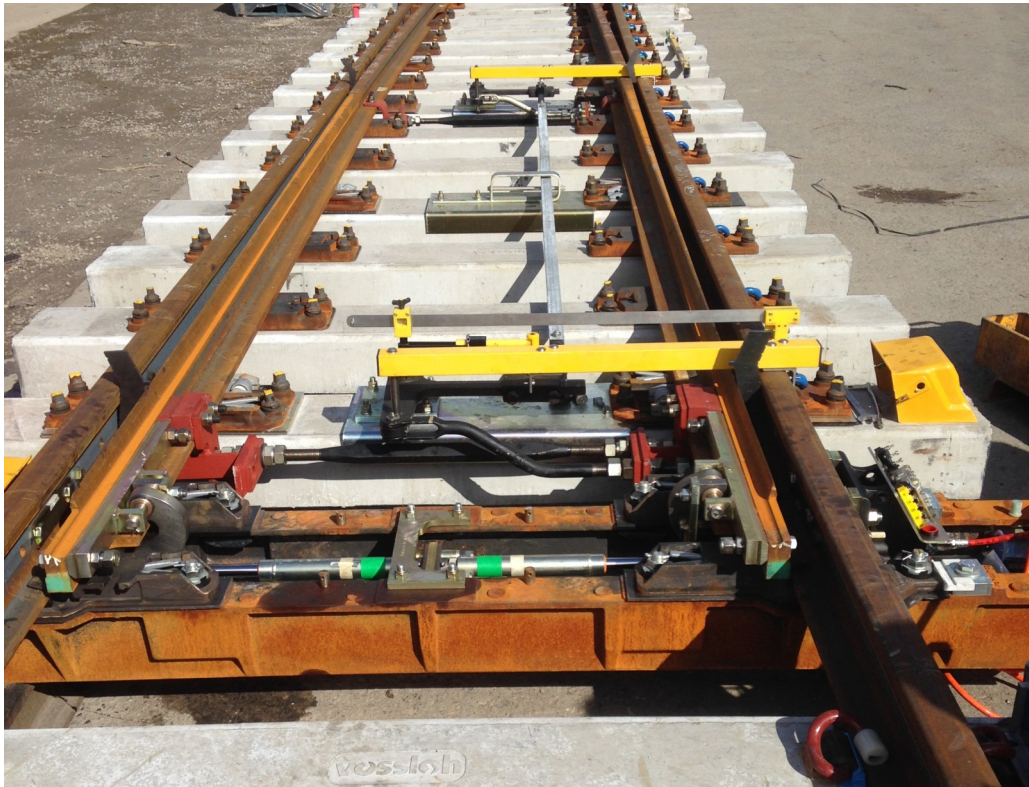




Specialists in the Sourcing of Permanent Way Materials

## DTS BACKDRIVE ALIGNMENT KIT (0111/111006) - PATENT PENDING



- CONSISTENTLY ALIGNS BACKDRIVES FROM MANUFACTURE TO MAINTENANCE.
- DESIGNED TO SUIT FULL DEPTH AND SHALLOW DEPTH SWITCHES IN 4 FT & 6 FT LOCATIONS.
- COMES WITH A VARIETY OF STEP GAUGES TO SUIT VARIOUS SWITCH LENGTHS.
- THE COMPLETE KIT CONSISTS OF:
  - 4 CRANK GAUGES TO SUIT FULL AND SHALLOW DEPTH WITH INTERCHANGABLE LOCATION PINS.
  - 9 PAIRS OF STEP GAUGES.
  - 2 PAIRS OF LOST MOTION GAUGES .
  - SLEEVE & CRANK PLATE ALIGNMENT GAUGE.
- RESULTS FROM RCM READINGS SHOW SIGNIFICANT IMPROVEMENTS IN P.O.E. PERFORMANCE.
- PRESSURE TEST RESULTS HAVE INDICATED THAT IT MAY BE POSSIBLE TO REDUCE THE LOAD BELOW 50 BAR.